

# LIST PRICE BOOK SWING JOINT & HEAVY TURF IRRIGATION FITTINGS

INCLUDES: PVC SWING JOINTS AND  
IRRIGATION ACCESSORIES

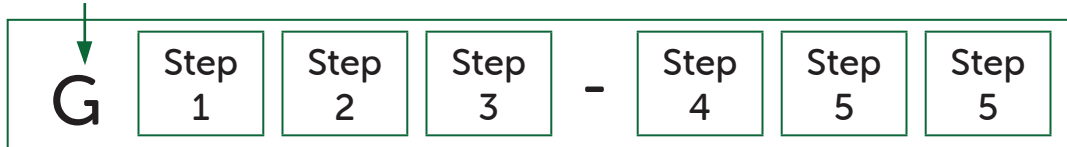
PRICE GROUP	DESCRIPTION	DISCOUNT MULTIPLIER
11	SWING JOINT	
08	HEAVY TURF	

Prices Effective August 18, 2025

**Westlake**  
Pipe & Fittings

# SWING JOINTS & HEAVY TURF PRICE LIST

First Digit



Base Part Number

## Step 1 - Specify a Body Diameter by Number

Second Digit	Diameter Size
1	1"
2	1¼"
3	1½"

## Step 2 - Specify an Inlet by Number

Third Digit	Inlet Size
1	Socket
2	Spigot (Short)
3	Male Thread (MIPT)
4	Male ACME
5	Metric Spigot
6	Male BSPT
7	Long Spigot (4" Long)
8	Female BSPT
9	Reducing Female BSPT
B	Male BSPT Vertical Mount - Male BSPT x ACME
H	Spigot Saddle Connection (Increases from 1" Spigot to Swing Joint size)
M	Main Line (Reduces from 1½" ACME to Swing Joint size)
N	Male MIPT Vertical Mount - MIPT x ACME
P	Tap't™ Saddle Connection (Reduces from 1½" ACME to Swing Joint size)



## Step 3 - Specify an Outlet by Number

Fourth Digit	Outlet Style
1	Socket
2	MIPT (Available in 1", 1¼" and 1½" diameter)
3	Enlarging MIPT (Available in 1", 1¼" and 1½" diameter)
4	MIPT Special (Available in 1" and 1¼" diameter)
5	Thread BSPT (Available in 1", 1¼" and 1½" diameter)
6	Enlarging BSPT (Available in 1½" diameter)
7	Reducing MIPT (Available in 1" diameter)
8	Increasing ACME (Available in 1½" diameter)
9	Increasing BSPT (Available in 1¼" diameter)
0	ACME (Available in 1", 1¼" and ½" diameter)
A	ACME Special (Available in 1¼" diameter)
C	Reducing ACME (Available in 1" diameter)
D	Reducing BSPT
E	Reducing MIPT (Reduces from 1" Swing Joint Size to ½")
F	Reducing MIPT (Reduces from 1" Swing Joint Size to ¾")
S	SnapLok (Available in 1" and 1½" diameter)
T	Reducing SnapLok (Available in ¾" diameter)
U	BSPT SnapLok (Available in 1" diameter)

**Step 4 - Swing Joint Style**

Fifth Digit	Swing Joint Style
<b>1</b>	Kits
<b>2</b>	Unitized Standard Sizes
<b>3</b>	Fabricated Length
<b>4</b>	Triple Top-Out
<b>5</b>	Fabricated Length with Triple Top-Out

**Step 5 - Specify Lay Length**

Style	Last 2 Digits	Lay Length	
<b>1__ or 4__</b>	00	-----	— Kits
<b>2__</b>	08	8"	— Unitized Standard Sizes
	12	12"	
	18	18"	
<b>3__</b>	10	10"	— Fabricated Sizes
	24	24"	
	30	30"	
<i>Please inquire about the availability of other lengths.</i>			
<b>4__</b>	08	8"	— Unitized Triple Top Sizes
	12	12"	
	18	18"	
<b>5__</b>	10	10"	— Fabricated Triple Top Sizes
	24	24"	
	30	30"	
<i>Please inquire about the availability of other lengths.</i>			

**Swing Joint Carton Quantity**

Part No.	Lay Length (in)	Ctn Qty
G___-08	8"	15
G___-12	12"	15
G___-18	18"	10

**Note:** All 1" Diameter are packaged 15 to a carton. The G3\_-412 are 10 per carton.

**Build and price your own unit with our online [Swing Joint Configurator](#)**

**Note:** All Westlake Pipe & Fittings Swing Joints are pressure rated at 315 psi.

Gray color on some swing joints does not necessarily indicate a Schedule 80 pressure rating. Be sure the units you specify and use bear a 315 psi rating.

# SWING JOINTS & HEAVY TURF PRICE LIST

## SWING JOINTS UNITIZED

Part No.	Swing Joint Size	8" Lay Length	12" Lay Length	18" Lay Length	Snaplok™ Size
<b>UNITIZED</b>					
G1__-2__	1"	111.22	124.60	138.14	-
G2__-2__	1¼"	152.01	165.37	178.87	-
G3__-2__	1½"	187.60	201.06	214.53	-
<b>UNITIZED WITH SNAPLOK™ OUTLET</b>					
G1_T-2__	1"	254.06	268.19	282.47	¾"
G1_S-2__	1"	254.06	268.19	282.47	1"
G1_U-2__	1" BSP	254.06	268.19	282.47	1" BSP
G3_S-2__	1½"	456.81	471.02	485.27	1½"
<b>UNITIZED W/TRIPLE TOP</b>					
G1__-4__	1"	179.97	193.39	206.79	-
G2__-4__	1¼"	229.43	242.98	256.43	-
G3__-4__	1½"	278.64	292.08	305.48	-
<b>UNITIZED W/TRIPLE TOP &amp; SNAPLOK™ OUTLET</b>					
G1_T-4__	1"	324.03	338.19	352.34	¾"
G1_S-4__	1"	324.03	338.19	352.34	1"
G1_U-4__	1" BSP	324.03	338.19	352.34	1" BSP
G3_S-4__	1½"	552.91	584.03	598.22	1½"

## SWING JOINTS FABRICATED

Part No.	Swing Joint Size	List Price			Snaplok™ Size
<b>FABRICATED TO LENGTH - 3XX</b>					
G1__-3__	1"	161.67			-
G2__-3__	1¼"	215.55			-
G3__-3__	1½"	249.20			-
<b>STANDARD FABRICATED TO LENGTH - 3XX W/SNAPLOK™ OUTLET</b>					
G1_T-3__	1"	316.19			¾"
G1_S-3__	1"	316.19			1"
G1_U-3__	1" BSP	316.19			1" BSP
G3_S-3__	1½"	510.80			1½"
<b>FABRICATED TO LENGTH W/ TRIPLE TOP - 5XX</b>					
G1__-5__	1"	230.74			-
G2__-5__	1¼"	293.39			-
G3__-5__	1½"	339.78			-
<b>STANDARD FABRICATED TO LENGTH - 5XX W/SNAPLOK™ OUTLET</b>					
G1_T-5__	1"	377.61			¾"
G1_S-5__	1"	377.61			1"
G1_U-5__	1" BSP	377.61			1" BSP
G3_S-5__	1½"	643.23			1½"

## SWING JOINTS 2" & 3"

Part No.	Swing Joint Size	8" Lay Length	12" Lay Length	18" Lay Length	Snaplok™ Size
<b>STANDARD FACTORY FABRICATED</b>					
G4__-3__	2"	-	515.37	595.84	-
G5__-3__	3"	-	1,022.15	1,181.84	-
<b>SPECIAL FACTORY FABRICATED FOR SIDE INLET ROTOR</b>					
G4__-9__	2"	-	762.73	854.68	-
G5__-9__	3"	-	1,431.00	1,593.27	-

## SWING JOINTS KITS

	Part No	Nominal Size (in)	Carton Qty	List Price	w/SnapLok™ Outlet
<b>MODEL 100</b>					
	G1__-100	1	5	96.73	238.77 (¾" & 1")
	G2__-100	1¼	5	129.84	-
	G3__-100	1½	5	159.34	426.97
<b>MODEL 400</b>					
	G1__-400	1	5	165.71	-
	G2__-400	1¼	5	205.79	-
	G3__-400	1½	5	249.96	-

## SWING JOINT REPLACEMENT PARTS



<b>SWING ARM</b>					
Part No	Nominal Size (in)	Length	Carton Qty	Code	List Price
G100-208	1	8	5	11	55.07
G200-208	1¼	8	5	11	65.81
G300-208	1½	8	5	11	83.04
G100-212	1	12	5	11	64.39
G200-212	1¼	12	5	11	77.01
G300-212	1½	12	5	11	97.23
G100-218	1	18	5	11	71.63
G200-218	1¼	18	5	11	85.54
G300-218	1½	18	5	11	108.08



<b>STREET ELBOW ASSEMBLY</b>				
Part No	Nominal Size (in)	Carton Qty	Code	List Price
G100-002	1	5	11	35.00
G200-002	1¼	5	11	51.21
G300-002	1½	5	11	61.03



<b>O-RINGS</b>				
Part No	Nominal Size (in)	Carton Qty	Code	List Price
53010	1	1	11	5.37
53012	1¼	1	11	7.39
53015	1½	1	11	8.33
53020	2	1	11	8.33
53234	3	1	11	8.33



<b>MALE BRASS STABILIZER ELBOW</b>					
Part No	Swing Joint Size	Outlet Size	Ctn Qty	Code	List Price
G001-011	1	1	5	11	89.66
G001-013	1	¾	5	11	89.66
G001-022	1½	1½	5	11	199.42
G001-023	1	1 BSPT	5	11	85.80



<b>SNAPLOK™</b>					
Part No	Swing Joint Size	Outlet Size	Ctn Qty	Code	List Price
G001-012	1	1 or ¾	5	11	37.32
G001-021	1½	1½	5	11	61.79

INLETS							
ID #	INLET	DESCRIPTION	INLET SIZE	SWING JOINT SIZE	REPLACEMENT INLET PART NO.	CARTON QTY	LIST PRICE
1		<b>Socket</b> <i>Socket x ACME</i>	1"	1"	G110-000	5	16.96
			1 1/4"	1 1/4"	G210-000	5	20.89
			1 1/2"	1 1/2"	G310-000	5	27.72
2		<b>Spigot - Short</b> <i>Spigot x ACME</i>	1"	1"	G120-000	5	16.96
			1 1/4"	1 1/4"	G220-000	5	20.89
			1 1/2"	1 1/2"	G320-000	5	27.72
3		<b>MIPT</b> <i>MIPT x ACME</i>	1"	1"	G130-000	5	16.96
			1 1/4"	1 1/4"	G230-000	5	20.89
			1 1/2"	1 1/2"	G330-000	5	27.72
4		<b>Male ACME</b> <i>ACME x ACME</i>	1"	1"	G001-006	5	16.96
			1 1/4"	1 1/4"	G001-005	5	20.89
			1 1/2"	1 1/2" (same as M)	G001-004	5	27.72
5		<b>Metric Spigot</b> <i>Spigot x ACME</i>	1" (2,5cm)	1"	G150-000	5	16.96
			1 1/4" (3,2 cm)	1 1/4"	G250-000	5	20.89
			1 1/2" (4,0 cm)	1 1/2"	G350-000	5	27.72
6		<b>Male BSPT</b> <i>Male BSPT x ACME</i>	1" (2,5cm)	1"	G160-000	5	16.96
			1 1/4" (3,2 cm)	1 1/4"	G260-000	5	20.89
			1 1/2" (4,0 cm)	1 1/2"	G360-000	5	27.72
7		<b>Long Spigot</b> <b>4" Long</b> <i>Spigot x ACME</i>	1"	1"	G170-000	5	16.96
			1 1/4"	1 1/4"	G270-000	5	20.89
			1 1/2"	1 1/2"	G370-000	5	27.72
8		<b>Female BSPT</b> <i>Female BSPT x ACME</i>	1" (2,5cm)	1"	G180-000	5	39.61
			1 1/2" (4,0 cm)	1 1/2"	G380-000	5	47.99

INLETS							
ID #	INLET	DESCRIPTION	INLET SIZE	SWING JOINT SIZE	REPLACEMENT INLET PART NO.	CARTON QTY	LIST PRICE
9		<b>Reducing Female BSPT</b> <i>Female BSPT x ACME</i>	1½" (4,0 cm) 1½"	1" 1"	G190-000	5	47.99
B		<b>Male BSPT Vertical Mount</b> <i>Male BSPT x ACME</i>	1" (2,5cm)	1"	G160-006	5	29.97
			1¼" (3,2 cm)	1¼"	G260-005	5	42.53
			1½" (4,0 cm)	1½"	G360-004	5	54.65
F		<b>InFusion</b> <i>Male ACME x Buttress Thread</i>	1½" 1½" 1½"	1" 1¼" 1½"	G312-015	5	54.65
H		<b>Spigot Saddle Connection</b> <i>Increases from 361-211 Saddle to Swing Joint Size</i>	1"	1"	G120-017	5	28.47
			1"	1¼"	G220-018	5	40.39
			1"	1½"	G320-019	5	49.33
M		<b>Main Line Connection</b> <i>Reduces from 1½" ACME Service Fitting to Swing Joint Size</i>	1½"	1"	G001-014	5	16.96
			1½"	1¼"	G001-016	5	20.89
			1½"	1½"	G001-004	5	27.72
N		<b>Male MIPT Vertical Mount</b> <i>MIPT x ACME</i>	1	1	G130-002	5	31.24
			1¼	1¼	G230-002	5	43.81
			1½	1½	G330-002	5	55.94
P		<b>Tap't™ Saddle Connection</b> <i>Reduces from 1½" ACME Tap't™ Saddle to Swing Joint Size</i>	1½"	1"	G001-017	5	29.97
			1½"	1¼"	G001-018	5	42.53
			1½"	1½"	G001-019	5	54.65

OUTLETS							
ID #	Outlet	Description	Swing Joint Size	Outlet Size	Replacement Outlet Part No.	Carton Qty	List Price
1		<b>Socket</b> <i>ACME x Socket</i>	1"	1"	507-010	5	17.94
			1¼"	1¼"	507-012	5	29.97
			1½"	1½"	507-015	5	33.26
2		<b>MIPT</b> <i>ACME x MIPT</i>	1"	1"	G102-000	5	15.23
			1¼"	1¼"	G202-000	5	29.97
			1½"	1½"	G302-000	5	33.26
3		<b>Enlarging MIPT</b> <i>ACME x MIPT</i>	1"	1½"	G102-211	5	42.53
			1¼"	1½"	G202-212	5	54.65
4		<b>MIPT Special</b> <i>ACME x MIPT</i>	1"	1¼"	G102-132	5	42.53
			1½"	1¼"	G302-169	5	54.65
5		<b>Thread BSPT</b> <i>ACME x BSPT</i>	1"	1" (2,5cm)	G104-000	5	17.89
			1¼"	1¼" (3,2 cm)	G204-000	5	29.97
			1½"	1½" (4,0 cm)	G304-000	5	33.26
6		<b>Enlarging BSPT</b> <i>ACME x BSPT</i>	1" (Currently unavailable)	1½" (4,0 cm) (Currently unavailable)	G106-211 (Currently unavailable)	5	42.53
			1¼"	1½" (4,0 cm)	G206-212	5	54.65
7		<b>Reducing MIPT</b> <i>ACME x MIPT Special</i>	1¼"	1"	G202-168	5	29.97
			1½"	1"	G302-133	5	54.65
8		<b>Increasing ACME</b> <i>ACME x ACME</i>	1"	1½"	G108-211	5	42.53
			1¼"	1½"	G208-212	5	54.65
9		<b>Increasing BSPT</b> <i>ACME x BSPT</i>	1"	1¼" (3,2 cm)	G106-132	5	42.53

OUTLETS							
ID #	Outlet	Description	Swing Joint Size	Outlet Size	Replacement Outlet Part No.	Carton Qty	List Price
O		ACME <i>ACME x ACME</i>	1"	1"	G100-002	5	35.00
			1 1/4"	1 1/4"	G200-002	5	51.21
			1 1/2"	1 1/2"	G300-002	5	61.03
A		ACME Special <i>ACME x ACME</i>	1" 1 1/2"	1 1/4" 1 1/4"	G108-132 G308-212	5 5	42.53 54.65
C		Reducing ACME <i>ACME x ACME</i>	1 1/4" 1 1/2"	1" 1"	G208-168 G308-133	5 5	29.97 54.65
D		Reducing BSPT <i>1 1/4" ACME x 1" BSPT</i>	1 1/4" 1 1/2"	1" 1"	G208-168 + G104-000 G308-133 + G104-000 (Requires both fittings)	5 5	See Individual List Price
E		Reducing MIPT <i>Female ACME x MIPT</i>	1"	1/2"	G102-130	5	13.86
F		Reducing MIPT <i>Female ACME x MIPT</i>	1"	3/4"	G102-131	5	14.22
S		Brass MIPT SnapLok™	1" 1 1/2"	1" 1 1/2"	G001-011 (Elbow) + G001-012 (SnapLok) G001-022 (Elbow) + G001-021 (SnapLok)	5 5	See Individual List Price
T		Brass Reducing MIPT SnapLok™	1"	3/4"	G001-013 (Elbow) + G001-012 (SnapLok)	5	See Individual List Price
U		Brass BSPT SnapLok™	1"	1"	G001-023 (Elbow) + G001-012 (SnapLok)	5	See Individual List Price

**SWING JOINT KITS**

- For swing arms that can be made up in the field to meet specific trench depths.
- Shipped as two assembled sections in a sealed bag.
- Installer has to cut and solvent weld pipe to desired length
- Follow approved procedures for solvent welding as per ASTM D2855-90



SWING JOINT KITS: MODEL 100			
Part No	Nominal Size (in)	Carton Qty	Code
G1_--100	1	5	11
G2_--100	1¼	5	11
G3_--100	1½	5	11

Refer to page 4 for pricing



TRIPLE TOP-OUT SWING JOINT KITS: MODEL 400			
Part No	Nominal Size (in)	Carton Qty	Code
G1_--400	1	50	11
G2_--400	1¼	25	11
G3_--400	1½	25	11

Refer to page 4 for pricing

**SWING JOINT ACCESSORIES**



SWING JOINT WIRE HOLDERS*				
Part No	Nominal Size (in)	Carton Qty	Code	List Price
G004-010	1	60	11	6.73
G004-012	1¼	60	11	7.42
G004-015	1½	60	11	8.49



- Eliminates the need for electrical tape or wire ties.
- Sufficient for four wires, either #12 or #14 single feeder irrigation control cable.
- To keep in place, a small amount of PVC pipe cement may be applied to one or both sides of the clip.

\*Westlake Pipe & Fittings "Wire holders" fit Westlake Pipe & Fittings Unitized Swing Joints only.



ACME TEST CAPS				
Part No	Nominal Size (in)	Carton Qty	Code	List Price
G548-010	1	50	11	8.71
G548-012	1¼	25	11	9.87
G548-015	1½	25	11	10.66

- The ACME Test cap can be used to pressure test systems that utilize swing joints with ACME threaded outlets
- This cap can also be used to keep the ring clean and the line free from debris.



Spigot x FIPT

FITTING ADAPTER				
Part No	Nominal Size (in)	Carton Qty	Code	List Price
478-010	1	25	11	10.71
478-012	1¼	25	11	14.92
478-015	1½	25	11	18.49
478-020	2	20	11	27.15

**SWING JOINT RISER KITS**

- Raise the height of ACME thread sprinkler heads without adjusting the swing joint lay length.
- Choose between pre-assembled ACME risers and ACME riser kits.
- Rated at 315 psi tested at 788 psi for 1 hour per ASTM F1970.



Female ACME x Male ACME

PRE-ASSEMBLED ACME RISER				
Part No	Nominal Size (in)	Carton Qty	Code	List Price
G587-002	1 x 7 Long	15	11	27.25
G587-003	1¼ x 7 Long	15	11	33.51
G587-001	1½ x 7 Long	15	11	44.31

Installation Notes: ACME O-ring sealed threads should be Finger Tightened and "Backed Off" one full rotation to provide maximum flexibility. Do NOT use Pre-Assembled ACME Riser Kits in conjunction with Sprinkler heads utilizing tapered pipe threads.

FOR USE ONLY WITH MALE ACME SWING JOINT OUTLETS.



Female ACME x Male ACME



Female ACME x Socket

ACME RISER KITS				
Part No	Nominal Size (in)	Carton Qty	Code	List Price
G590-002	1	15	11	27.25
G590-003	1¼	15	11	33.51
G590-001	1½	15	11	44.31

ACME FEMALE ADAPTER				
Part No	Nominal Size (in)	Carton Qty	Code	List Price
G001-002	1	25	11	16.96
G001-003	1¼	25	11	20.89
G001-001	1½	25	11	27.72

**SWING JOINT OUTLET ADAPTERS**



FIPT x ACME

OUTLET ADAPTERS - FIPT X ACME					
Part No	FIPT	Male ACME	Carton Qty	Code	List Price
G102-010	1	1	50	11	17.73
G002-132	1	1¼	25	11	24.45
G002-133	1	1½	25	11	29.53
G202-012	1¼	1¼	25	11	21.86
G002-169	1¼	1½	25	11	29.53
G002-212	1½	1¼	25	11	24.45
G302-015	1½	1½	25	11	26.07

- Convert swing joints with MIPT to ACME heads.
- Reduce Inventory - adapt MIPT swing joints to ACME heads.
- No wrench, thread sealant or Teflon needed.
- Both connections are O-ring sealed for leak-free operation
- Works with all MIPT swing joints.



BSPT x ACME

OUTLET ADAPTERS - BSPT X ACME					
Part No	Female BSPT	Male ACME	Carton Qty	Code	List Price
G108-010	1	1	50	11	16.00
G008-132	1	1¼	25	11	22.00
G008-133	1	1½	25	11	29.53
G208-012	1¼	1¼	25	11	19.65
G008-169	1¼	1½	25	11	29.53
G008-212	1½	1¼	25	11	24.45
G308-015	1½	1½	25	11	26.07

- Convert swing joints with BSPT to ACME heads
- Reduce Inventory - adapt BSP outlet swing joints to ACME heads.
- No wrench, thread sealant or Teflon needed.
- Both connections are O-ring sealed for leak-free operation
- Works with all BSP outlet swing joints.

**HEAVY TURF ADAPTERS**



ACME x ACME

SWING JOINT ADAPTERS - ACME X ACME					
Part No	Male ACME	Female ACME	Carton Qty	Code	List Price
539-132	1	1¼	25	11	29.53
539-133	1	1½	25	11	29.53
539-168	1¼	1	25	11	29.53
539-169	1¼	1½	25	11	29.53
539-211	1½	1	25	11	29.53
539-212	1½	1¼	25	11	29.53

- Change the ACME outlet diameter without digging up the Swing Joint
- Reduce the sprinkler conversion costs.
- Adapt other brands of Swing Joints to Westlake Pipe & Fittings Service Fittings.
- Reduce WPF Heavy Turf Mainline fittings from 1½" ACME to 1" and 1½ Female ACME thread.

**ACME SERVICE FITTINGS**

- Use the proven ACME O-ring Service Seal fittings to provide leak-free connection to the Westlake Pipe & Fittings Swing Joint.
- The ACME Service Seal fittings do not require Teflon or thread sealant.
- ACME Service Seal fittings improve installation and lower maintenance costs.
- Designed expressly for Westlake Pipe & Fittings Swing Joints with either the "M" or "P" inlet connection.
- Service Tee and Service Elbow for mainline & end-of-line connections.
- Solvent cement for welded joint line connections.
- 1½" Female ACME threads on the swing joint port to eliminate splitting & cracking.
- Rated at 315 p.s.i. per ASTM F1970.



Socket x Socket x ACME

SERVICE TEE				
Part No	Nominal Size (in)	Carton Qty	Code	List Price
302-251	2 x 1½	10	08	14.45
302-291	2½ x 1½	5	08	20.78
302-337	3 x 1½	5	08	42.97



Socket x ACME

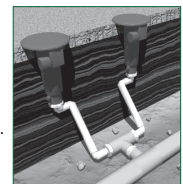
SERVICE ELBOW				
Part No	Nominal Size (in)	Carton Qty	Code	List Price
307-251	2 x 1½	10	08	11.55
307-291	2½ x 1½	5	08	15.67
307-337	3 x 1½	5	08	31.95



ACME x ACME x ACME

DOUBLE SWING TEE - ACME X ACME X ACME				
Part No	Nominal Size (in)	Carton Qty	Code	List Price
305-015	1½ x 1½	10	08	14.45

- 1½" ACME thread on all connections.
- 315 PSI Rated by ASTM F-1970.
- Use two Swing Joints from one mainline connection.
- Requested by Designers and Contractors.
- Use "M" Inlet to connect to 1", 1¼", or 1½" Swing Joints.

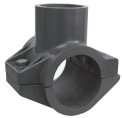


Spigot x ACME

REDUCING BUSHING				
Part No	Nominal Size (in)	Carton Qty	Code	List Price
338-337	3 x 1½	5	08	41.36

- 1½" ACME O-ring female threads.
- Used to adapt solvent mainline fittings for use as 1½" ACME O-ring mainline fittings.
- Thread sealant or Teflon Tape is not required.

**TAP'TS™ AND THRUSTS™**



**SADDLE WITH SOCKET TOP-OUT**

Part No	Nominal Size (in)	Carton Qty	Code	List Price
361-211	1½ Saddle x 1 Socket	5	B8	32.37

Pressure rated at 235 p.s.i. per ASTM F1970



**TAP'T™ SADDLES WITH FIPT TOP-OUT**

Part No	Nominal Size (in)	Carton Qty	Code	List Price
362-209	1½ Saddle x ½ FIPT	2	B8	46.65
362-210	1½ Saddle x ¾ FIPT	5	B8	46.65
362-211	1½ Saddle x 1 FIPT	5	B8	46.65

For use with Swivel Joints. Pressure rated at 235 p.s.i. per ASTM F1970



**TAP'T™ SADDLES WITH ACME TOP-OUT**

Part No	Nominal Size (in)	Carton Qty	Code	List Price
364-251	2 Saddle x 1½ FACME	5	B8	40.85
364-337	3 Saddle x 1½ FACME	5	B8	55.75
364-419	4 Saddle x 1½ FACME	5	B8	67.49
7364-J-015	63mm x 1½	5	B8	40.85

Pressure rated at 235 p.s.i. per ASTM F1970



**LOW PROFILE HEAVY TURF ACME TRANSITION ADAPTER**

Part No	Nominal Size (in)	Carton Qty	Code	List Price
536-211	1½ X 1	10	08	24.33

MACME x SLIP

- Converts service fittings with 1½ Female ACME to 1" Socket
- Allows field conversions from 1½ Female AMCE to conventional connection types (Slip and FPT)
- Can use bushings or adapters to transition to FPT threads
- Only adds 0.34" in height • 315 psi wp



**THRUST PLUG**

Part No	Nominal Size (in)	Carton Qty	Code	List Price
349-020	2	15	B8	18.78



**TAP'T™ HYBRID COUPLING (END OF THE LINE FITTING)**

Part No	Nominal Size (in)	Carton Qty	Code	List Price
P330-251	2 x 1½	10	08	58.16

HDPE x Female ACME

- Designed for Butt Fusion, Socket Fusion or Electrofusion
- Designed for 2" HDPE Lateral line
- Eliminate debris entrapment
- Completely clean out the system
- Saves water by keeping rotor valves clean
- Eliminate the end cap at the end of the line
- Eliminate the last Tap't Saddle
- Reduces installation time
- Metric size 63mm also available
- Use with P-Inlet Swing Joint



**TAP'T™ COUPLINGS**

Part No	Nominal Size (in)	Carton Qty	Code	List Price
344-251	2 x 2 x 1½	15	08	58.08
344-291	2½ x 2½ x 1½	15	08	77.60
344-337	3 x 3 x 1½	10	08	104.21
344-419	4 x 4 x 1½	5	08	135.07

**HDPE TRANSITION UNION**

These unions are specially designed to connect HDPE lateral lines to various size gate valves and remote pressure regulating valves. These HDPE Transition Unions can be placed on both sides of the valve assembly for easy removal. Simply loosen the union nuts and disassemble.



- Designed for butt fusion, socket fusion or electrofusion onto 2" or 63mm HDPE lateral lines
- Made in USA • Buna O-Ring • 200 psi
- Union design for easy removal of the valve assembly.
- Compatible with 1" - 2" Valves

**HDPE TRANSITION UNION**

Part No	Nominal Size (in)	Carton Qty	Code	List Price
P896-249	2" HDPE x 1" MIPT	10	08	58.27
P896-250	2" HDPE x 1¼" MIPT	10	08	58.27
P896-251	2" HDPE x 1½" MIPT	10	08	58.27
P896-020	2" HDPE x 2" MIPT	10	08	58.27
P7896-J-249	63MM HDPE x 1" MIPT	10	08	61.67
P7896-J-250	63MM HDPE x 1¼" MIPT	10	08	61.67
P7896-J-251	63MM HDPE x 1½" MIPT	10	08	61.67
P7896-J-020	63MM HDPE x 2" MIPT	10	08	61.67

**22½° ELBOWS**

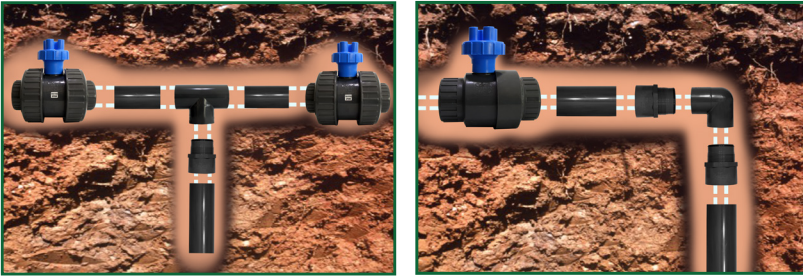


**22½° ELBOWS**

Part No	Nominal Size (in)	Carton Qty	Code	List Price
865-020	2	10	02	*
865-030	3	5	02	*

\* Refer to Schedule 80 sheet for pricing

ISO VALVE CONNECTORS



302 Tee  
Slip x Slip x ACME



307 Elbow  
Slip x ACME



308 Elbow  
ACME x ACME



336 Male Adapter  
ACME x Slip

ISO VALVE CONNECTORS

Part No	Nominal Size (in)	Carton Qty	Code	List Price
302-020	2	10	08	16.55
307-020	2	10	08	15.35
308-020	2	10	08	12.27
308-030	3	4	08	72.47
336-020	2	10	08	17.01
336-030	3	10	08	41.83

- For easy repair and replacement of 2" isolation valves.
- Same design as the ACME O-ring leak-free joint.
- Teflon or sealants are NOT required.
- Rated at 315 p.s.i. per ASTM F1970.

SURGE GUARD® FITTINGS



Slip x Slip

SURGE GUARD® TEES

Part No	Nominal Size (in)	Carton Qty	Code	List Price
301-020	2	25	08	14.15
301-025	2½	10	08	29.65



Slip x Slip

SURGE GUARD® REDUCING TEES

Part No	Nominal Size (in)	Carton Qty	Code	List Price
301-249	2 x 1	10	08	12.73
301-250	2 x 1¼	10	08	12.73
301-251	2 x 1½	10	08	12.73
301-289*	2½ x 2½ x 1	5	08	37.78
301-290*	2½ x 2½ x 1¼	5	08	37.78
301-291*	2½ x 2½ x 1½	5	08	37.78
301-292*	2½ x 2½ x 2	5	08	34.08

\* Indicates fabricated fitting



Slip x Slip

SURGE GUARD® ELBOW 90°

Part No	Nominal Size (in)	Carton Qty	Code	List Price
306-020	2	25	08	8.51
306-025	2½	10	08	23.96



Slip x Slip

SURGE GUARD® REDUCING ELBOW 90°

Part No	Nominal Size (in)	Carton Qty	Code	List Price
306-249	2 x 1	25	08	7.65
306-250	2 x 1¼	25	08	7.65
306-251	2 x 1½	25	08	7.65
306-289*	2½ x 1	5	08	35.17
306-290*	2½ x 1¼	5	08	35.17
306-291*	2½ x 1½	5	08	35.17
306-292*	2½ x 2	5	08	35.17

\* Indicates fabricated fitting



Slip x Slip

SURGE GUARD® ELBOW 45°

Part No	Nominal Size (in)	Carton Qty	Code	List Price
317-020	2	25	08	9.48
317-025	2½	10	08	14.96



Slip x Slip

SURGE GUARD® ELBOW 22½°

Part No	Nominal Size (in)	Carton Qty	Code	List Price
365-025	2½	10	08	17.97

Our Patented Westlake Pipe & Fittings Surge Guard® Fittings were designed to be the strongest and most forgiving PVC Golf Course Fittings we have ever produced.

We now have third party testing results to verify: The Westlake Pipe & Fittings Surge Guard® Tees are 10X Stronger than Sch 80 Tees.

Based on repeat high stress failure testing from: The Center for Irrigation Technology (CIT) at Fresno State University.



Click here to read the [Test Report](#)

# 2" and 3" Sports Field Swing Joints



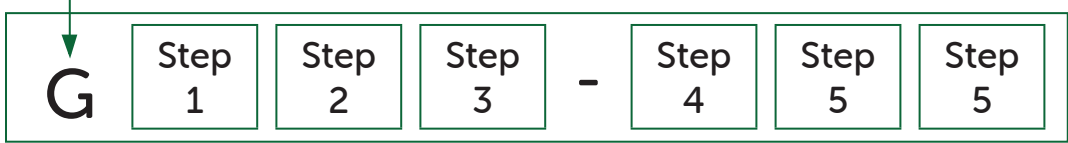
2" and 3" Swing Joints for Sports Field applications:

These large swing joints are designed for use with large sprinklers for artificial and natural turf applications, such as Horse Tracks, Polo, Soccer, and Football Fields. These ACME Swing Joints have the same flexibility as the smaller Westlake Pipe & Fittings Swing Joints, but have been designed to handle the large volume of water used by large radius sideline sprinklers.

- Available in various lengths and connections
- Schedule 80 pipe for extra strength
- BSPT Inlet and Outlet options
- Designed for use with either bottom inlet or side inlet sprinklers
- Proven ACME threads for durability and flexibility



First Digit



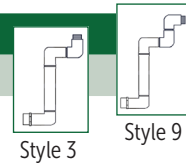
Base Part Number

Step 1 - Specify a Body Diameter by Number	
Second Digit	Diameter Size
4	2"
5	3"

Step 2 - Specify an Inlet by Number	
Third Digit	Inlet Size
1	Socket
2	Spigot (Short)
3	Male Thread (MIPT)
4	Male ACME
6	Male BSPT
7	Long Spigot (4" Long)

Step 3 - Specify an Outlet by Number	
Fourth Digit	Outlet Style
1	Socket
2	MIPT
5	Male BSPT
7	Reducing MIPT (2" Reduces to 1½") (3" Reduces to 2½")
D	Reducing Male BSPT (2" Reduces to 1½" White Outlet) (3" Reduces to 2½")
E	Special Reducing Male BSPT (3" Reduces to 2")

Step 4 - Specify Swing Joint Style	
Fifth Digit	Swing Joint Style
3	Standard Factory Fabricated
9	Special Factory Fabricated for Side Inlet Rotor



Step 5 - Specify Lay Length by Number	
Last 2 Digits	Lay Length
12	12"
18	18"

**Note:** All Westlake Pipe & Fittings Swing Joints are pressure rated at 315 psi.  
Gray color on some swing joints does not necessarily indicate a Schedule 80 pressure rating. Be sure the units you specify and use bear a 315 psi rating.

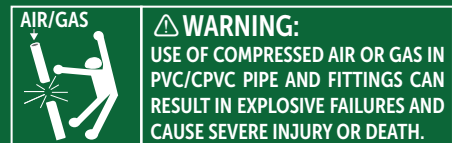
## TERMS AND WARRANTY

As you explore our latest product offerings, the Terms and Conditions and the Warranty information are available on our website through the links below.

[Terms and Conditions](#)

[Warranty](#)

DO NOT USE WESTLAKE FITTINGS FOR COMPRESSED AIR OR GASES.  
DO NOT TEST PVC PIPING SYSTEMS WITH COMPRESSED AIR OR GASES.  
DO NOT USE FITTINGS WITH LIQUIDS NOT RECOMMENDED BY WESTLAKE PIPE & FITTINGS.  
MODIFICATIONS OF FITTINGS VOIDS THE WARRANTY.



[www.westlakepipe.com](http://www.westlakepipe.com)

**Sales & Distribution Center**  
**Westlake Pipe & Fittings**  
**414 Westlake Way**  
**Brownsville, TN 38012**  
**T 1.800.776.2756**  
**F 1.731.772.0835**

[csbrownsville@westlakepipe.com](mailto:csbrownsville@westlakepipe.com)

**Westlake**  
**Pipe & Fittings**