



WATER WELL

**CERTA-LOK CLIC®**

Well Casing

**Westlake**  
Pipe & Fittings



# Certa-Lok CLIC® PVC Well Casing

Certa-Lok CLIC® is the newest evolution in Water Well products from Westlake Pipe & Fittings, offering distinct advantages to help boost your bottom line. Certa-Lok CLIC's all-in-one design comes together in a snap allowing for 40% faster assembly over traditional Certa-Lok® Well Casing.

**Features and Benefits:**

- **Increased Efficiency** – lower installed cost and time savings to the driller compared to conventional casing.
- **Less Complexity** – all-in-one integrated component eliminates the need for inventory of splines or use of special tools.
- **All-Weather Resistant** – heat, cold, moisture, humidity, snow, and wind do not affect assembly or disassembly.
- **No Solvents or Welding** – eliminates the need for solvent cements or welding.
- **Range of Sizes** – available from 4" – 12".
- **Instant Full-Strength Joint** – Once assembled, the Certa-Lok CLIC joint can withstand the full safe tensile load immediately.



## Check out our Water Well Calculators

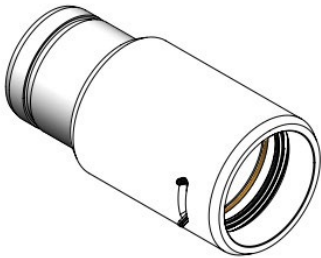
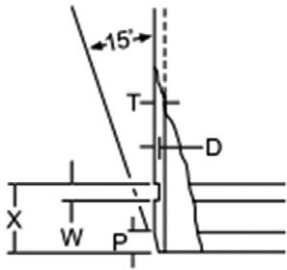
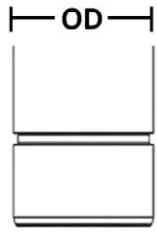
Use these calculators to estimate the best Westlake Pipe & Fittings piping solution for your project:

- [Certa-Lok CLIC Well Casing ROI](#)
- [Well Drop Pipe](#)
- [Slotted Well Casing Flow Rate](#)
- [Well Casing Depth](#)

Short Form Specification	
Pipe Standard:	ASTM F480
Nominal Sizes:	4" – 12"
Dimension Ratios:	DR 17, DR 21, SCH. 40, SCH. 80
Lay Length:	20'
Pipe Compound:	ASTM D1784 Cell Class 12454
Gasket Standard:	ASTM F477
Gasket Material:	Nitrile (NBR), IR/SBR*
Certifications:	NSF 61, NSF 14

*\*10" and above nominal sizes.*

For a full list of Certa-Lok accessories such as adapters, couplings, caps, and slotting casing configurations, refer to our Sure-Fit®, Certa-Lok and Slotted PVC Well Casing brochure.



**Certa-Lok CLIC® Dimensions**

Nominal Size	OD Size	X	W	D		P	Bell Depth
				Min.	Max.		
4	4.500	3.063	0.438	0.125	0.145	0.271	5.300
4.5	4.950	3.063	0.438	0.125	0.145	0.271	5.300
5	5.563	3.063	0.438	0.125	0.145	0.271	5.300
6	6.625	3.125	0.500	0.125	0.145	0.271	5.300
6.9	6.900	3.125	0.500	0.125	0.145	0.271	5.300
8	8.625	3.250	0.625	0.135	0.155	0.634	5.000
10	10.750	3.563	0.625	0.205	0.225	0.634	5.300
12	12.750	3.563	0.625	0.205	0.225	0.634	5.300

**Certa-Lok®/IB Male x Cert-Lok CLIC® Female Well Casing Adapter**

Nominal Size	Weight (lbs.)	Length (in.)	BOD (in.)	X (in.)	W (in.)	P (in.)	Part No.
4	3.84	11.125	4.950	1.313	0.375	0.241	745770
6	7.28	11.875	7.600	1.313	0.375	0.241	745771
6.9	8.32	13.125	7.840	1.313	0.375	0.241	745772

**Certa-Lok CLIC® Splines**

**O-Ring**

Nominal Size	Color	Part Number	Cross Section	Color	Material	Part Number
4	White	S0404CN1	0.210	Brown	NBR	OR040YMNN
4.5	Yellow	S0454CN1	0.210	Brown	NBR	OR045IBON
5	Blue	S0504CN1	0.210	Brown	NBR	OR050IBON
6	Red	S0604CN1	0.210	Brown	NBR	OR060IBON
6.9	White	S0694CN1	0.210	Brown	NBR	OR069IBON
8	Yellow	S0804CN1	0.375	Blue	NBR	OR080YMNI
10	Blue	S1004CN1	0.375	Green	IR/SBR	OR100WCOI
12	Red	S1204CN1	0.375	Green	IR/SBR	OR120WCOI

**NOTE:** When looking into the bell of Cert-Lok CLIC, the color should be visible to ensure proper installation of the spline.

Certa-Lok CLIC® Dimensions & Performance										
Nominal Size	OD Size	Class	T Min. Wall	I.D. Min.	Bell O.D.	RHCP (psi)	Max. Tensile Pull (lbs)	Max. Internal Pressure	Approx. Weight (lb./ft.)	Part No.
4	4.500	SCH40	0.237	3.968	5.060	152	4,400	115	2.06	34S040020210S0
4.5	4.950	SCH40	0.248	4.379	5.550	130	5,550	130	2.37	34S045020210S0
		DR17	0.291	4.288	5.650	215	6,700	160	2.75	34D045020210S0
5	5.563	DR21	0.265	4.941	6.200	111	5,100	130	2.86	34G050020210S0
		DR17	0.327	4.809	6.250	215	9,400	180	3.49	34D050020210S0
		SCH80	0.375	4.708	6.350	329	9,400	215	3.96	34T050020210S0
6	6.625	SCH40	0.280	5.970	7.313	77	9,100	115	3.68	34S060020210S0
		DR21	0.316	5.912	7.375	111	7,550	150	4.13	34G060020210S0
		DR17	0.390	5.728	7.450	215	10,900	200	4.95	34D060020210S0
6.9	6.900	DR21	0.329	6.157	7.631	111	10,250	150	4.40	34G069020200S0
		DR17	0.406	5.964	7.710	215	12,850	200	5.22	34D069020200S0
		DR14	0.493	5.785	7.894	395	12,850	215	6.4	34C069020200S0
8	8.625	DR17	0.508	7.458	9.750	215	22,300	140	8.38	34D080020210S0
10	10.750	DR17	0.632	9.310	12.188	215	23,400	160	13.4	34D100020210S0
12	12.750	DR17	0.750	11.020	14.250	215	33,600	200	18.79	34D120020210S0

## Assembly of Certa-Lok CLIC® PVC Well Casing

### 1. INSPECT

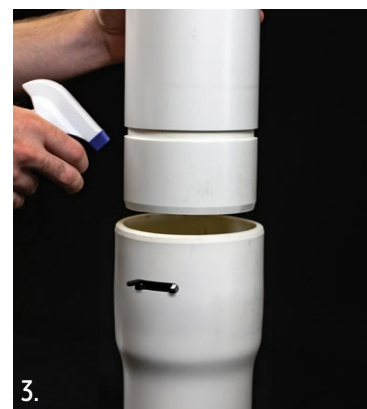
- Examine the bell end of the casing to be joined. Verify that the White spline tab extending from the left overlaps on top of the black spline tab extending from the right.

### 2. CLEAN

- Clean the joining surfaces and make sure gaskets are clean and evenly seated in the gasket groove. Inspect gaskets for damage.

### 3. LUBRICATE

- Westlake Pipe & Fittings approved PVC pipe lubricant should be applied to the joining surfaces prior to assembly. Apply only to the exposed gasket surface and to the tapered end of the casing.
- CAUTION: To maintain joint integrity, do not apply lubricant to the spline or to the spline grooves.



# Assembly of Certa-Lok CLIC® PVC Well Casing

## 4. ASSEMBLE

- a. Ensure straight alignment of pipe bell and spigot. Firmly insert the pipe spigot into the bell. The factory insertion line should be covered by the bell when fully inserted.

*Note: When load is applied, the insertion line may reappear, the joint will remain secured.*



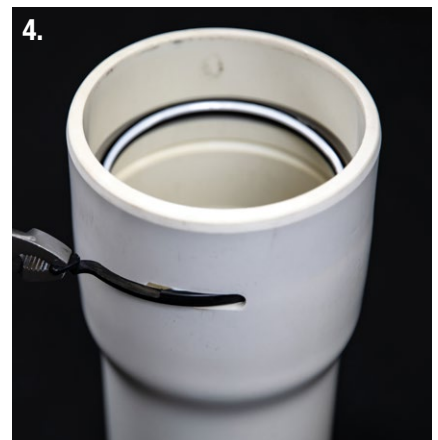
# Disassembly of Certa-Lok CLIC® PVC Well Casing

The Certa-Lok CLIC® joint may be easily disassembled through the following steps:

1. **REMOVE LOAD & ENSURE COMPLETE SPIGOT INSERTION.** The factory insertion mark should not be visible when the spigot is fully inserted and load removed from the joint.
2. **ENSURE STRAIGHT ALIGNMENT.** Brace the lifted pipe section and make sure it is in straight alignment with the joint to be disassembled at the surface.
3. **LIGHTLY PINCH THE SPLINE TABS.** Pinch the spline tabs together until met with resistance. *The tabs do not need to be squeezed together until they touch.* Over pinching or pulling outward on the tabs may also prevent disassembly.
4. **LIFT THE PIPE SECTION.** Lift and remove the spigot from the bell. Adhere to the assembly steps above to reassemble the Certa-Lok CLIC joint.

**REMOVING THE SPLINE FROM AN ASSEMBLED JOINT:** If the joint is unable to be disassembled by pinching the spline tabs, the following steps may be used to remove the spline from the joint.

- a. Using a pair of vice grips or pliers, pull outward on one of the spline tabs to expose the tab outside of the bell.
- b. Using shears or wire cutters, cut the spline tab at the base, so that the right angle formed by the tab is no longer present on the end of the spline.
- c. Make sure all load has been removed from the joint, and that the two pipe sections are in straight alignment.
- d. Grip the sole remaining spline tab with a pair of vice grips or pliers, and pull on the spline to remove it from the joint.
  1. **Tip:** twisting the spigot end of the joint in the same direction as the spline being pulled can aid in enabling the spline to be pulled from the joint.



# Removal & Insertion of the Certa-Lok CLIC® Spline

If necessary, the Certa-Lok CLIC® spline is removable from the joint and may be re-inserted following removal.

## REMOVING THE SPLINE FROM AN UNASSEMBLED JOINT:

1. Reach inside of the bell opposite the spline tabs, and pull the spline up and out of the spline groove with your fingertips. Continue until the spline is fully removed from the bell.
  - a. **Caution:** Gloves should be worn to protect your hands. The corners of the spline groove may be rough or sharp. Care should be taken when removing the spline to prevent injury.



## INSERTING THE SPLINE INTO AN UNASSEMBLED JOINT:

1. Ensure the spline and spline groove are clean and free of any dirt or debris. Remove any burrs or PVC shavings with a file.
2. Verify that the colored strip on the spline is facing upward, or towards the bell end of the pipe and that the spline tabs are crossed over one another in the proper orientation, with the white tab on top of the black tab.



3. Hold the spline above the bell and push the spline tabs into the spline hole, securing them in place with your thumb.





4. Press inward on the sides of the spline while applying downward pressure to work the spline into the bell. Continue to press the back of the spline downward until the entire spline is fully seated in the spline groove. Verify the chamfered side of the spline is facing upward towards the bell lip.



5. Verify proper function of the spline by pinching the spline tabs and observing the function of the spline inside the bell.

Contact Westlake Pipe & Fittings Technical Services at 484-435-7474 or [technical@westlakepipe.com](mailto:technical@westlakepipe.com) for additional assistance.







Some of all of these products are protected by patents. Visit [www.westlakepipe.com/patents](http://www.westlakepipe.com/patents) and learn about our commitment to product innovation.