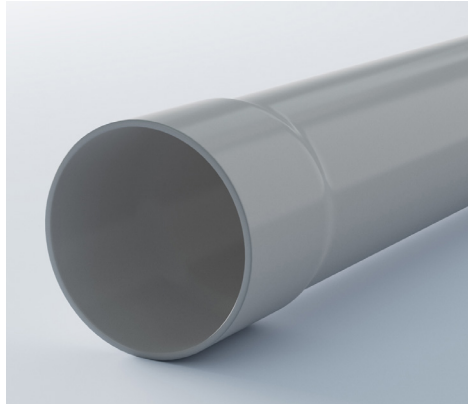


PRODUCT SPECIFICATION

RIGID ELECTRICAL CONDUIT

Solvent Weld Integral Bell

Rigid PVC Conduit provides a protected pathway for easily pulling wire conductors. PVC conduit offers significant labor reduction to install compared to metal because it's easy to cut and join, weighs a fraction of metal, and doesn't require additional steps for direct burial. Westlake Pipe & Fittings' Rigid Electrical Conduit offers superior performance, contributing to the overall success and efficiency of your electrical project.

**Short Form Specification**

Pipe Standard:	UL 651, NEMA TC-2
Diameter Std.:	IPS (Iron Pipe Size)
Nominal Sizes:	1/2", 3/4", 1", 1 1/4", 1 1/2", 2", 2 1/2", 3", 4", 5", 6", 8"
Wall Thickness:	Schedule 40
Conduit Length:	10' or 20'
Installation Std.:	National Electrical Code (NEC) Article 352

Applications	Conduit
Color:	Grey
Certifications:*	UL 651



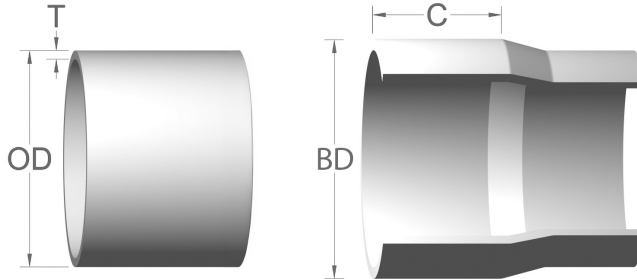
*See Certification Letter for full explanation and list of exceptions.



PRODUCT SPECIFICATION

RIGID ELECTRICAL CONDUIT

Solvent Weld Integral Bell



Notes:

1. These dimensions are for estimating purposes only. All dimensions are in inches unless otherwise specified.
2. Internal diameter calculated using nominal outside diameter and minimum wall thickness.

RIGID ELECTRICAL CONDUIT					
Nom. Size	Outside Diameter (OD)	Min. Wall Thickness (T)	Approx. Internal Diameter (ID)	Approx. Bell Diameter (BD)	Bell Depth (C)
1/2	0.840	0.110	0.620	1.040	1.750
3/4	1.050	0.113	0.824	1.250	1.750
1	1.315	0.134	1.047	1.530	2.000
1 1/4	1.660	0.141	1.378	1.920	2.250
1 1/2	1.900	0.145	1.610	2.160	2.500
2	2.375	0.154	2.067	2.650	2.750
2 1/2	2.875	0.204	2.467	3.220	3.250
3	3.500	0.217	3.066	3.870	3.500
4	4.500	0.238	4.066	4.910	4.250
5	5.563	0.258	5.047	6.020	4.500
6	6.625	0.280	6.065	7.120	5.500
8	8.624	0.323	7.978	9.210	5.875