



MUNICIPAL

# Products Overview

CANADA

**Westlake**  
Pipe & Fittings

# PVC: Canada's Preferred Municipal Pipe



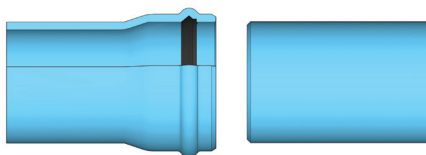
Our municipal waterworks and sewer infrastructure demands pipe systems that are proven to last. Our water and wastewater infrastructure is in critical condition and PVC pipe has become the clear economic choice for long-lasting functionality. Today, PVC pipe is specified for its lifetime durability, corrosion resistance and ease of installation.

Westlake Pipe & Fittings' Municipal PVC Pipe Solutions are proven for potable water, gravity & force main sewers, and the growing use of water reclamation pipe as potable water becomes a precious resource. Repairs and new installations are simply easier and more cost effective with Westlake Pipe & Fittings' PVC pipe systems:

- Corrosive and chemical resistant, inside and out
- Segmented pipe for simple assembly in restrictive job site conditions
- Certa-Lok® restrained joint pipe systems are completely non-metallic
- More dimensionally stable than HDPE and faster to install and repair than fused joints
- Proven solutions for trenchless & open-cut applications
- Available with Certa-Lok technology for restrained joint applications
- UV/Impact-resistant Yelomine® formulation available for bypass and temporary pipe systems
- Products are selectively listed, see product specification sheets for industry listings:

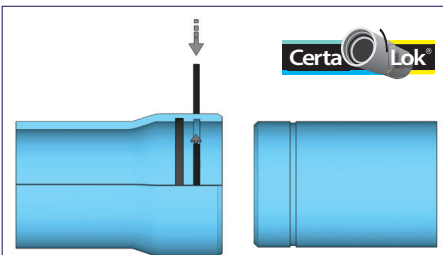


## Make the Connection



### IB: (Bell & Spigot)

- Water, Sewer, & Reclaim
- Open cut installation
- CIOD: AquaSpring™ C900
- IPS: ASTM D2241
- PSM: ASTM D3034/F679
- Rieber Gasket/ASTM F477



### RJIB: (Restrained Joint Integral Bell)

- Water, Sewer, & Reclaim
- Trenchless or open-cut installation
- CIOD: AquaSpring™ C900 Certa-Lok®
- Yelomine – temporary bypass
- 6" through 24"
- Profile Gasket/ASTM F477

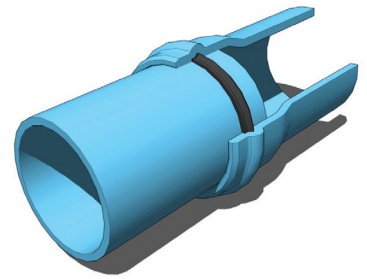


## IB: Integral Bell

Our Integral Bell & Spigot design is excellent for open-cut applications where the affordability and durability of PVC are required.

Pressure Pipe	Pipe Sizes	DR	Pressure Class	CSA	BNQ
CIOD: AquaSpring™ C900 Potable Water, Force Main & Reclaim  CSA B137.3 BNQ 3624-250	30", 36"	51	80 psi	X	
	14"-18", 30", 36"	41	100 psi	X	
	14"-36"	32.5	125 psi	X	
	4"-36"	25	165 psi	X	X (4" to 24")
	4"-30"	18	235 psi	X	X (4" to 24")
	4"-12"	14	305 psi	X	X
IPS: ASTM D2241 Potable Water, Force Main & Reclaim	1.5"-18"	SDR 21 thru 41	100 thru 200 psi	X (16", 18" SDR26)	

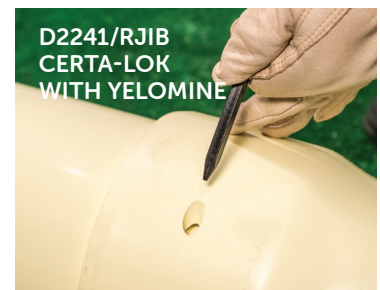
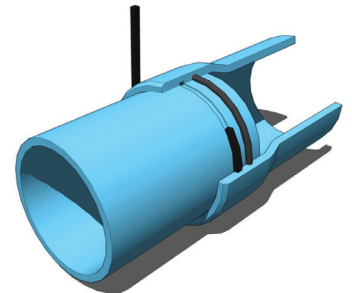
Gravity Sewer	Pipe Sizes	SDR	Pipe Stiffness	CSA	BNQ
PSM CSA B182.2 BNQ 3624-135/130	4"-36"	SDR 35	46 psi	X	X (4" to 27")
	14"-18", 30", 36"	SDR 26	115 psi	X	X (4" to 18")
	4", 5", 6"	SDR 28	90 psi	X	X



## RJIB: Restrained Joint Integral Bell

Certa-Lok RJIB has a smooth profile perfect for horizontal directional drilling & static pipe bursting applications. Available in Certa-Lok D2241/RJIB with Yelomine for temporary bypass applications.

Pressure Pipe	Pipe Sizes	DR	Pressure Class	CSA
CIOD: AquaSpring™ C900/RJIB Certa-Lok® Potable Water, Force Main & Reclaim	6"-24"	25	165 psi	X
	6"-24"	18	235 psi	X
	6"-12"	14	305 psi	X
IPS: D2241/RJIB Certa-Lok® with Yelomine® Potable Water, Force Main, Reclaim, Aboveground & Temporary Bypass	4"-8"	21	200 psi	
	4"-8"	17	250 psi	
	Yelomine is a unique modified PVC compound designed to be sunlight & impact resistant for reliable above ground use. NSF approved for potable water use.			



# Why Segmented PVC?

Segmented PVC pipe solutions offer the greatest combination of versatility, durability and longevity of any municipal pipe system available. Westlake Pipe & Fittings' non-metallic restrained & unrestrained pipe systems can be used interchangeably for projects that require both open-cut and trenchless installations. Segmented pipe allows for smaller pipe staging area and can greatly reduce community disruption in high traffic site conditions (intersections, under highways, roads, walkways, etc.) vs. fused pipe.

With much of our nation's municipal water and wastewater infrastructure in critical condition, longevity & design life are often the most important factors for choosing pipe materials. PVC is both proven and most commonly specified by municipalities across the country; up to 80% of municipalities in the U.S. specify PVC pipe according to a recent trenchless pipe material guide survey.

PVC pipe is easier to maintain & does not corrode (inside or out) like ductile iron so it offers much better operational cost advantages over

**BEST LIFE-COST  
MATERIAL –  
PVC DOES NOT  
CORRODE,  
INSIDE OR OUT**

the life of the pipe system.

Segmented PVC pipe is faster to install than fused pipe systems and does not require expensive equipment or long staging areas.

Learn about our commitment to product innovation at [westlakepipe.com](http://westlakepipe.com).



*"PVC is the proven material when performance counts. It has an impressive track record for longevity, durability, low maintenance and ease of assembly. Owners attribute its exceptional performance to its corrosion resistance, chemical resistance and deep- insertion, bell-and-spigot, gasketed joints."*

Craig Fisher, Former Technical Director  
for the Uni-Bell PVC Pipe Association

Some or all of these products are protected by patents. Visit [www.westlakepipe.com/patents](http://www.westlakepipe.com/patents) for more information.