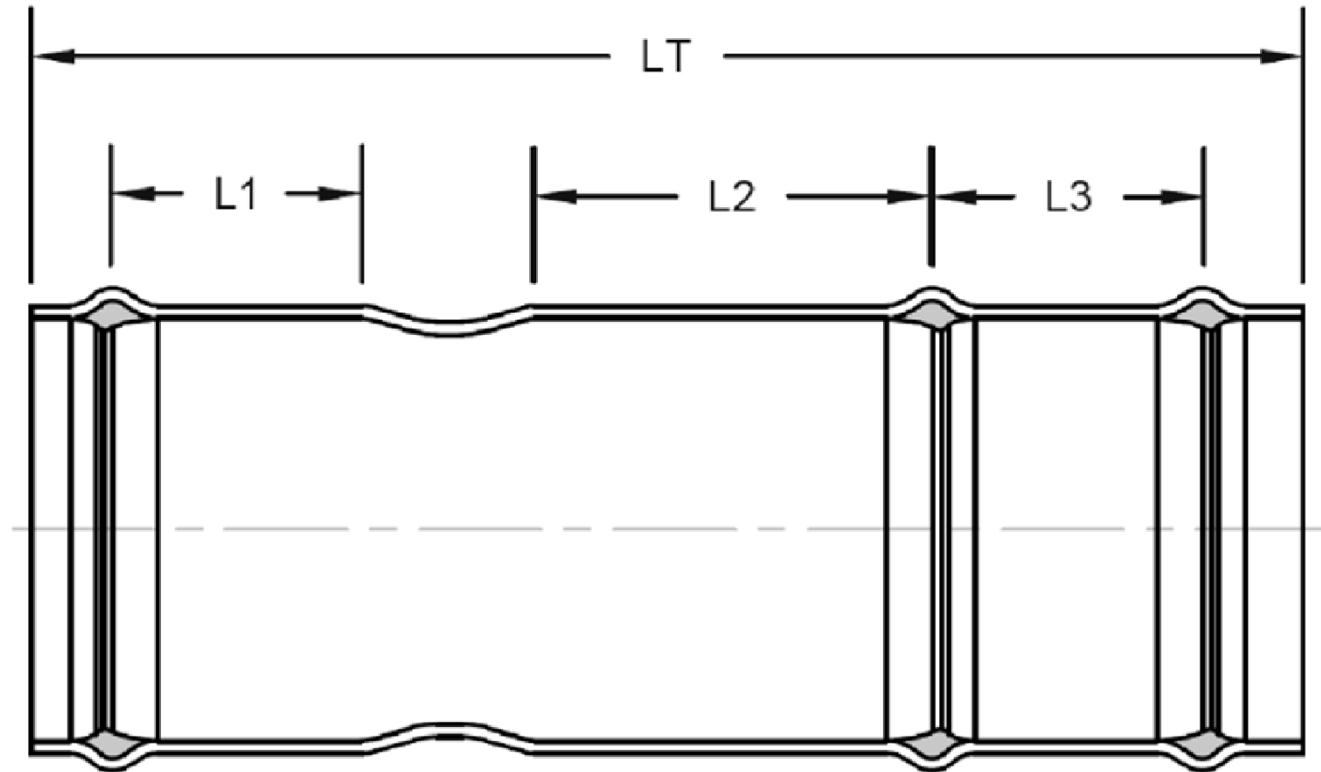


SIGNED DRAWINGS MUST ACCOMPANY PURCHASE ORDER OR DIMENSIONS OF FITTINGS WILL NOT BE GUARANTEED



| DIMENSIONS | | | | | |
|------------|------|-------|-------|-------|--------|
| PART # | SIZE | L1 | L2 | L3 | LT |
| T6006 | 6" | 4.000 | 6.000 | 4.000 | 20.000 |

DISCLAIMER - PLEASE READ

- DIMENSIONS AND APPEARANCE ARE APPROXIMATE AND SUBJECT TO CHANGE WITHOUT NOTICE DUE TO DESIGN OR PRODUCTION MODIFICATIONS
- ANGLE TOLERANCE IS +/- 2 DEGREES.
- ALL OTHER DIMENSIONS ARE TO TOLERANCES OF +/- 1"
- ALL FITTINGS ARE SUBJECT TO NAPCO "STANDARD TERMS AND CONDITIONS"

NAPCO PIPE & FITTINGS

56400 Mound Road
 Shelby Township, MI 48316
 U.S.A.
 Phone (800) 232-5690 | Fax (586) 781-0888
 CSShelby@napcopipe.com | www.napcopipe.com

**6" CONTROLLED SETTLEMENT JOINT
 PVC GASKETED IPS DRAINAGE (CLASS 160)**

6"x 6" GxG

PRINTED COPIES ARE FOR REFERENCE ONLY

DATE: 9/4/2015 DRAWN BY: RKS
 DATE: 9/4/2015 CHECKED BY: RBP

T6006.L

CUSTOMER