

PRODUCT SPECIFICATION

C900/RJ CERTA-LOK® PVC PRESSURE PIPE

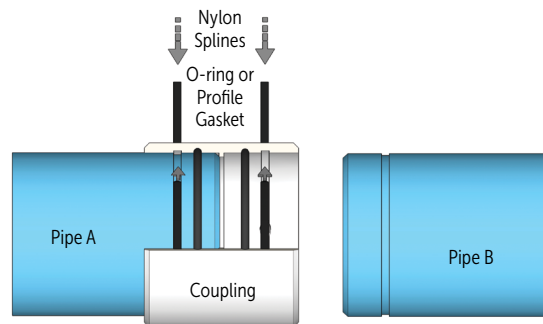
Restrained Joint

Our C900/RJ Certa-Lok PVC Pressure Pipe is manufactured to meet the standards of today's municipal needs for water and wastewater pressure applications. This unique coupled, restrained-joint system is jobsite proven for decades and designed for trenchless applications with robust tensile strength for pulling multiple segments underground. The low profile coupling allows for quick and easy assembly without interrupting the pulling process and provides greater deflection at the joint for leak-free results. The system assembles in minutes and eliminates costly time consuming fusion.

A segmented PVC pipe solution, this product reduces the jobsite footprint and minimizes community disruption with reduced need for jobsite staging area and traffic control. This coupled pipe system is offered in sizes 4" through 24" with two gaskets per coupling for a leak-free joint and greater deflection capability. Gaskets are available in styrene-butadiene rubber (SBR) as a standard as well as acrylonitrile butadiene rubber (NBR) depending on your soil and site conditions.

INSTALLATION METHODS

- Horizontal directional drilling (HDD)
- Static pipe-bursting
- Open-cut
- Carrier pipe through casings



SHORT FORM SPECIFICATION	
Pipe Standard:	C900
Diameter Std.:	Cast Iron Outside Diameter (CIOD)
Nominal Sizes:	4", 6", 8", 10", 12", 14", 16", 18", 20", 24"
Dimension Ratios & Pressure Ratings:	DR 25 – 165 psi DR 18 – 235 psi DR 21 – 200 psi DR 14 – 305 psi
Standard Lay Length:**	20', 40'
Pipe Compound:	ASTM D1784 Cell Class 12454
Coupling Material:	4"–12": ASTM D1784 Cell Class 12454 14"–24": Fiberglass Composite
Pipe Joint Std.:	ASTM D3139
Max. Angular Joint Deflection:‡	0.5° per side of coupling, 1° total per joint
Gasket Standard:	ASTM F477, UL 157
Gasket Material Offering:	Standard – IR/SBR, Optional – NBR
Installation Std.:	AWWA C605

**Only 20' lengths are hydrotested. ‡See Installation Guide for more information.

Applications	Potable Water	Waste-water	Reclaimed Water
Pipe Color:	Blue	Green	Purple
Coupling Color			
4" – 12":	White	White	White
4" – 24":	Tan	Tan	Tan
Certifications:*	NSF 61 NSF 14 UL 1285	None	None

*See Certification Letter for full explanation and list of exceptions.



Only products bearing the NSF Mark are Certified



PRODUCT SPECIFICATION

C900/RJ CERTA-LOK® PVC PRESSURE PIPE

Restrained Joint

C900/RJ CERTA-LOK PIPE & COUPLING DIMENSIONS

Nom. Size	Outside Diameter (OD)	DR	Pipe							Coupling		
			Min. Wall Thickness (T)	Internal Diameter (ID)	X	W	D	P	Weight (lb/ft)	BOD	L	Weight (lb/ft)
4"	4.800	18	0.267	4.266	3.000	0.375	0.135	0.302	2.5	5.964	8.250	4.0
		14	0.343	4.114					3.1			
6"	6.900	18	0.383	6.134	3.000	0.500	0.135	0.302	5.1	8.366	8.250	7.1
		14	0.493	5.914					6.4			
8"	9.050	18	0.503	8.044	3.163	0.500	0.145	0.634	8.7	10.947	10.500	15.5
		14	0.646	7.758					11.0			
10"	11.100	18	0.617	9.866	3.625	0.750	0.215	0.634	13.2	13.361	11.125	23.9
		14	0.793	9.514					16.6			
12"	13.200	18	0.733	11.734	3.625	0.750	0.215	0.634	18.6	15.836	12.000	36.1
		14	0.943	11.314					23.5			
14"	15.300	25	0.612	14.076	3.610	0.750	0.215	0.634	18.3	16.400	12.000	26.9
		21	0.729	13.842					21.7			
		18	0.850	13.600					25.0			
16"	17.400	25	0.696	16.008	3.610	0.750	0.215	0.634	23.7	18.875	12.000	39.8
		21	0.829	15.742					28.0			
		18	0.967	15.466					32.4			
		14	1.243	14.914					40.9			
18"	19.500	25	0.780	17.940	4.035	1.100	0.300	0.750	29.8	20.870	15.000	47.0
		21	0.929	17.642					35.1			
		18	1.083	17.334					40.6			
20"	21.600	25	0.864	19.872	4.035	1.100	0.300	0.750	36.5	23.120	15.000	55.7
		21	1.029	19.542					43.1			
		18	1.200	19.200					49.8			
24"	25.800	25	1.032	23.736	4.035	1.100	0.300	0.750	52.1	27.620	15.000	81.3
		21	1.224	23.342					61.5			
		18	1.433	22.934					71.1			

Notes:

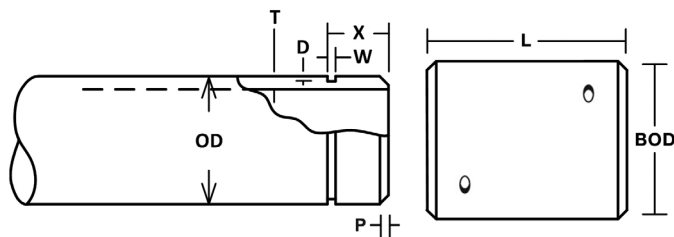
1. These dimensions are for estimating purposes only. All dimensions are in inches unless otherwise specified.
2. DR = Dimension Ratio
3. AWWA Pressure Class @ 73°F and includes 2:1 safety factor.
4. Maximum Pull Force based on actual testing and includes 2:1 safety factor.
5. Internal diameter calculated using nominal outside diameter and minimum wall thickness.

PRODUCT SPECIFICATION

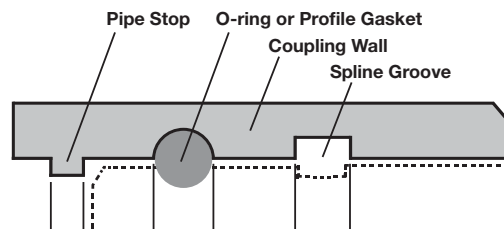
C900/RJ CERTA-LOK® PVC PRESSURE PIPE

Restrained Joint

PERFORMANCE DATA					
Nom. Size	DR	Pressure Class (psi)	Min. Bend Radius (ft)	Max. Pull Force (lbf)	*Max. % Change per 20' Stick
4"	18	235	100	7,800	9.98
	14	305		9,800	
6"	18	235	144	16,000	7.00
	14	305		18,900	
8"	18	235	188	23,100	5.25
	14	305		24,300	
10"	18	235	232	40,500	4.38
	14	305		48,700	
12"	18	235	275	50,500	3.68
	14	305		53,800	
14"	25	165	319	52,500	3.15
	21	200		57,000	
	18	235		61,500	
16"	25	165	363	68,500	2.80
	21	200		68,500	
	18	235		68,500	
	14	305		68,500	
18"	25	165	406	97,000	2.45
	21	200		105,000	
	18	235		113,000	
20"	25	165	450	107,500	2.28
	21	200		112,500	
	18	235		117,500	
24"	25	165	538	120,000	1.93
	21	200		132,500	
	18	235		145,000	



C900/RJ COUPLING DETAIL:



*Refer to "Changing Direction of PVC Pipelines" Technical Bulletin for more information.

PRODUCT SPECIFICATION

C900/RJ CERTA-LOK® PVC PRESSURE PIPE

Restrained Joint

C900/RJ CERTA-LOK ACCESSORIES

Application	Nom. Size	Couplings			Splines				Gaskets			
		Material	Max. Pressure (psi)	Part Number*	Material	Size	Length	Part Number	Material	Shape	Size	Part Number
Standard	4"	PVC	305	82157292743	Nylon	0.250x0.250	18	S0418SN0	IR/SBR	Round	0.313	OR040RJOI
	6"	PVC	305	82157292309	Nylon	0.250x0.375	24	S0624TN0	IR/SBR	Round	0.313	OR060RJOI
	8"	PVC	305	82157292330	Nylon	0.250x0.375	32	S0832TN0	IR/SBR	Round	0.400	OR080RJOI
	10"	PVC	305	82157292316	Nylon	0.375x0.625	39	S1039TN0	IR/SBR	Round	0.438	OR100RJOI
	12"	PVC	305	82157292323	Nylon	0.375x0.625	46	S1246TN0	IR/SBR	Round	0.438	OR120RJOI
	14"	Fiberglass Composite	235	82157741296	Nylon	0.375x0.625	51	S1451TN0	IR/SBR	Round	0.438	OR140RJOI
	16"	Fiberglass Composite	235	82157741272	Nylon	0.375x0.625	56	S1656TN0	IR/SBR	Round	0.407	OR160RJOI
			305	82157716310	Nylon	0.500x0.750	60	S1660TN0	IR/SBR	Profile	0.750 x 0.513	GSPR001600
	18"	Fiberglass Composite	235	82157741333	Nylon	0.563x0.975	68	S1868TN0	IR/SBR	Profile	0.825 x 0.566	GSPR001800
	20"	Fiberglass Composite	235	82157716312	Nylon	0.563x0.975	75	S2075TN0	IR/SBR	Profile	0.825 x 0.566	GSPR002000
24"	Fiberglass Composite	235	82157741340	Nylon	0.563x0.975	88	S2488TN0	IR/SBR	Profile	0.825 x 0.566	GSPR002400	
Oil-Resistant	4"	PVC	305	82157292331	Nylon	0.250x0.250	18	S0418SN0	NBR	Round	0.313	OR040RION
	6"	PVC	305	82157292332	Nylon	0.250x0.375	24	S0624TN0	NBR	Round	0.313	OR060RION
	8"	PVC	305	82157292333	Nylon	0.250x0.375	32	S0832TN0	NBR	Round	0.400	OR080RION
	10"	PVC	305	82157292334	Nylon	0.375x0.625	39	S1039TN0	NBR	Round	0.438	OR100RION
	12"	PVC	305	82157292335	Nylon	0.375x0.625	46	S1246TN0	NBR	Round	0.438	OR120RION

* = Includes coupling, 2 gaskets, and 2 splines

Some or all of these products are protected by patents. Visit www.westlakepipe.com/patents for more information.