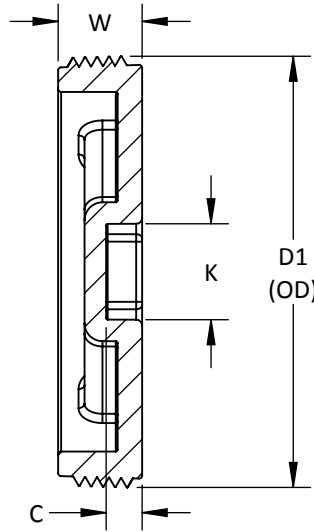


MOLDED



ASTM D2665, F1866, CSA B181.2 WHERE APPLICABLE

**THREADED PLUG - COUNTERSUNK
PVC DWV**

PART NO.	SIZE IN INCHES	D1	K	W	C
* D1144	4	4 15/32	1	7/8	3/8
* D1146	6	6 19/32	2	1 1/16	9/16
* D1148	8	8 19/32	3	1 1/8	5/8
* D11410	10	10 11/16	3	1 13/32	9/16
* D11412	12	12 11/16	3	1 17/32	9/16

-- DIMENSIONS AND APPEARANCE ARE APPROXIMATE AND SUBJECT TO CHANGE
WITHOUT NOTICE DUE TO DESIGN OR PRODUCTION MODIFICATIONS
-- MOLDED FITTING TOLERANCE = ±1/8" OVERALL LENGTH
-- FABRICATED FITTING TOLERANCE = ±1" LINEAR, ± 2° ANGULAR

* MOLDED FITTING
† ASSEMBLED FROM MOLDED COMPONENTS
ALL OTHER FITTINGS ARE FABRICATED